

Digital Surveillance Solutions from TTM

TTM Digital Surveillance has been designed with the user in mind. Based around PC Based technology the Surveillance System can be used on up to 16 cameras. The Multicam system, uses built-in motion detect technology and can be set to record only moving objects. The system then stores these with a date and time stamp.

These CCTV images are compressed onto the PC's Hard Disk. CCTV images can then be viewed locally or remotely from anywhere in the world via an internet connection.

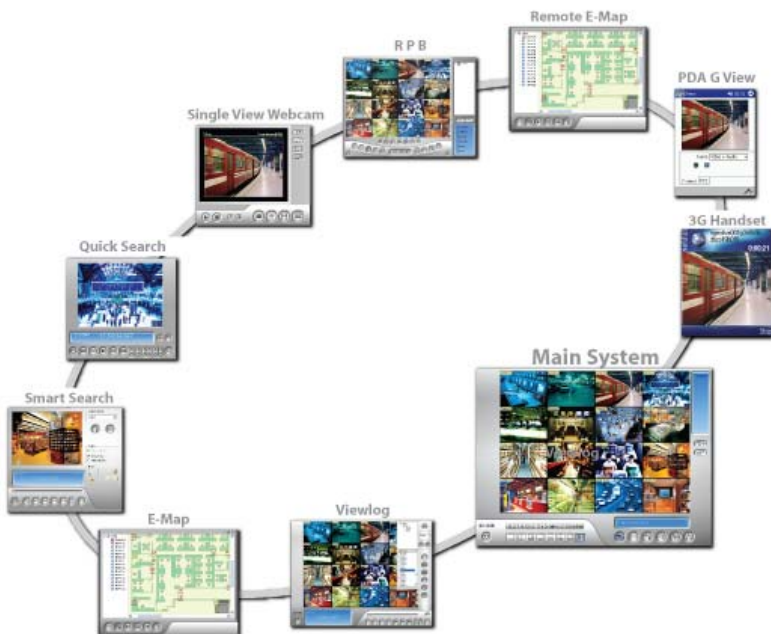
Our digital surveillance systems come in a variety of enclosures, ensuring the CCTV system can be used in any application.

Unique compact design and innovation make the TTM Vision one of the most popular surveillance systems.

With up to 1TB storage it is a very powerful unit that can blend into any surrounding.

The rack mount solution is perfect for installation in IT/ Server rooms, this Surveillance System is 19", 4U with up to 4TB storage.

The TTM-Rack mount is the preferred option for multiple systems with more than 16 cameras



The system has Advanced Video Analytics solutions which offer Real Time alerts on situations such as suspicious / lost object and face detection.



The powerful remote view solution the Webcam Server.

The Digital Surveillance system has a wide range of remote view functionality, allowing users to view their cameras from anywhere in the world using 56K Modem, ISDN or Broadband.

TTM NVR - IP Network Video Recorder Solution



The NVR is a pure software IP solution designed for IP Camera integration.

Up to 16 IP Cameras can be connected from a variety of IP camera manufacturers including Mobotix, AXIS, IQInvision, JVC, Panasonic and Sony. The NVR is also fully compatible with GeoVision IP products including GV-IP Camera and GV-Video Server.

The NVR (Network Video Recorder) software has all of the same features as the standard digital CCTV recorder but without the need to install a PCI Capture card. It has built in advanced video analytics, EPOS, LPR as well as Remote Video Monitoring integration support.

Taking advantage of Mega Pixel IP cameras, the NVR software has built in Picture in Picture and Picture and Picture modes providing zoom-in/focus of your high resolution IP images.



New Vandal Resistant Day/Night IP Dome Camera with 1.3 Mega Pixel Resolution. Designed for integration with the Hybrid Surveillance & NVR solutions.

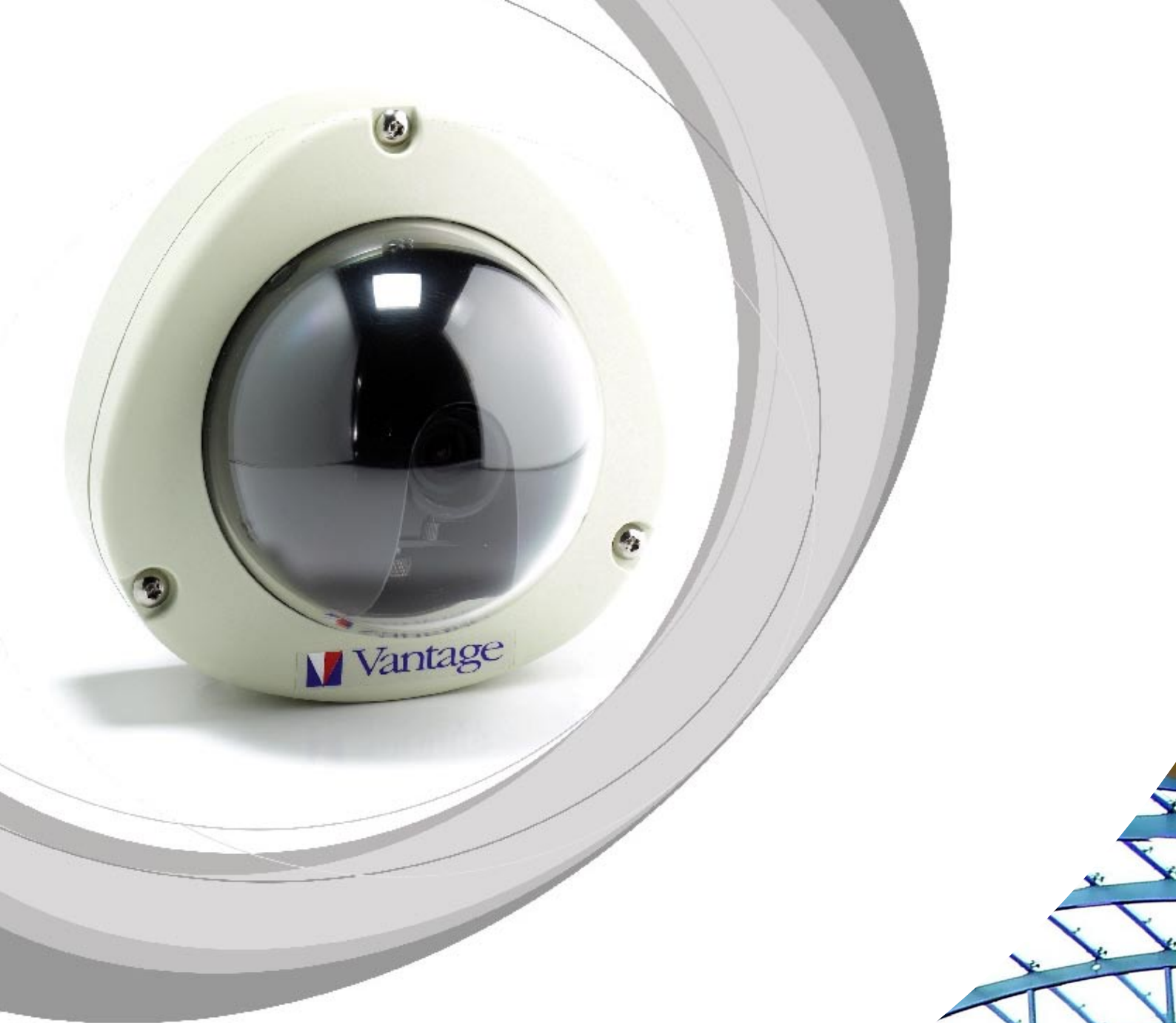
This IP Dome Camera offers 1.3 Mega Pixel Resolution at 1280 x 960 with Dual Streaming JPEG/MPEG4 support and is IP66 Weatherproof. The added functionality of Two way Audio and 3GPP means this IP Camera has all the functionality you might need for your IP Security System.



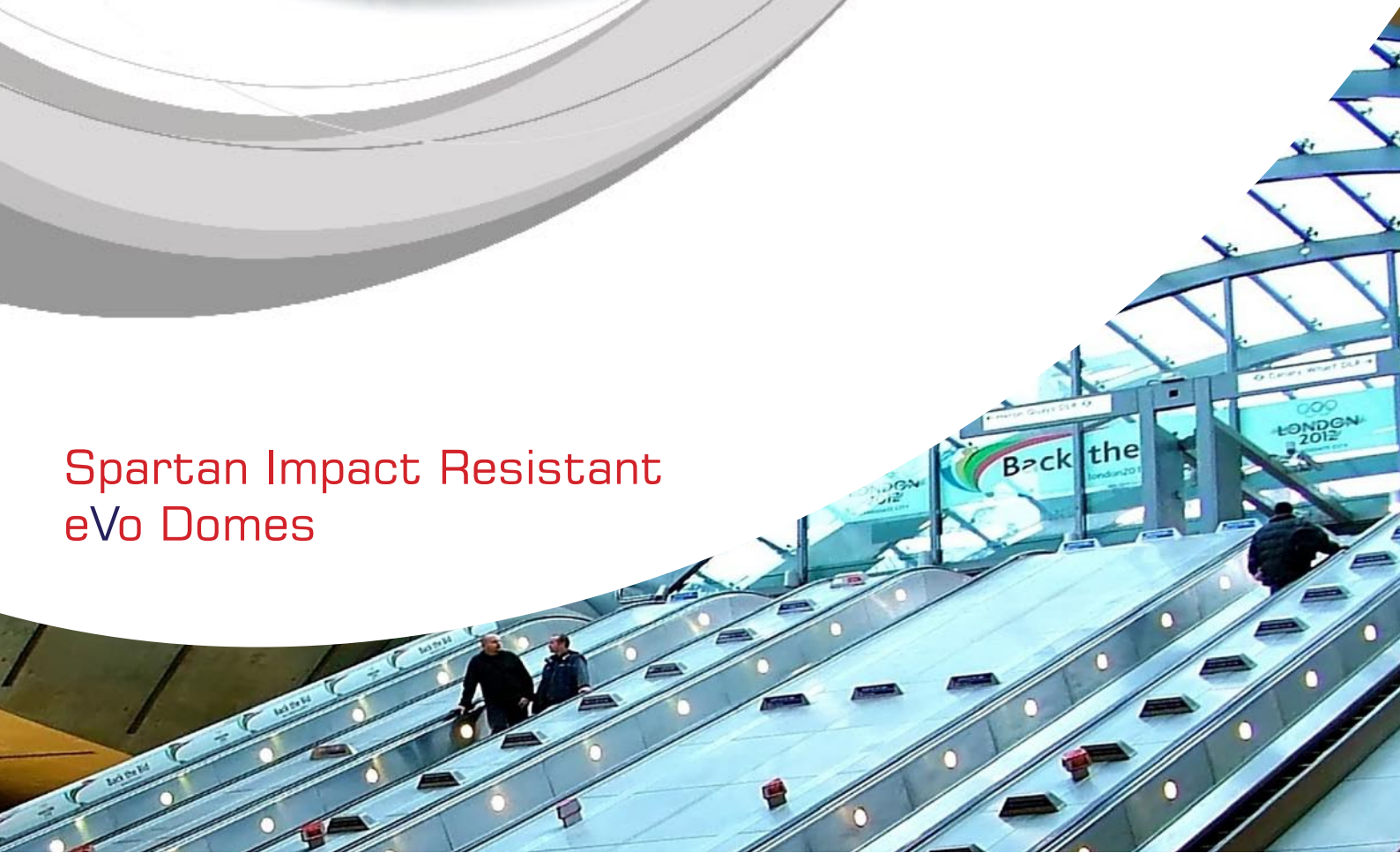
The new GeoVision IP Camera solution, the GV-IPCAM1.3 is a Day/Night Mega Pixel IP Camera designed for integration with the Hybrid Surveillance & NVR solutions.

This IP CCTV Camera offers 1.3 Mega Pixel Resolution at 1280 x 960 with Dual Streaming JPEG/MPEG4 support and Day/Night images with 0.02 lux @ F1.2.

The added functionality of Two way Audio and 3GPP means this IP Camera has all the functionality you might need for your IP Security System.



Spartan Impact Resistant eVo Domes



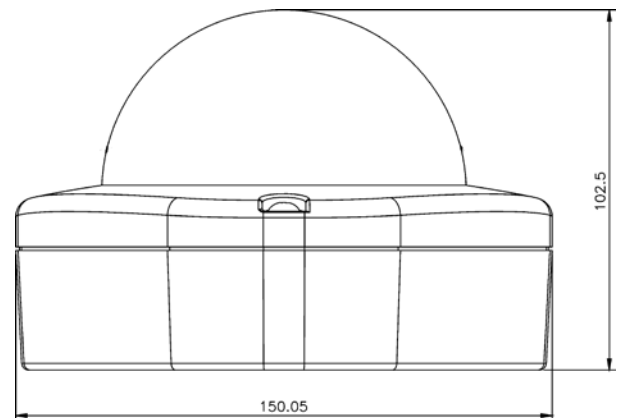
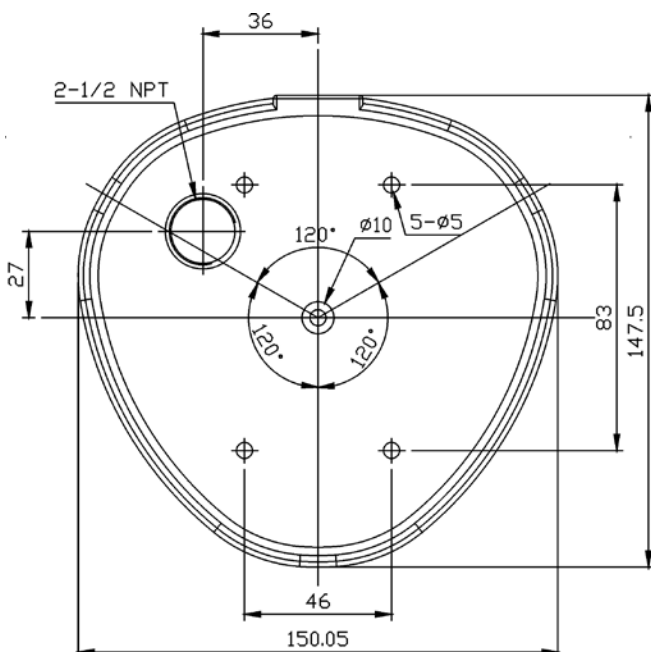
SPARTAN IMPACT RESISTANT eVo DOMES

FEATURES



- Simple to install
- Available in colour / monochrome
- Available in day / night (moving filter)
- High resolution output 520TVL Colour 580TVL Mono
- Advanced 1/3" Sony CCD technology
- New improved Multi axis Gimbal
- VARIFOCAL auto iris direct drive lens
- Moving filter (VSCM520IR)
- 12V DC operating voltage
- Impact resistant
- Water resistant to IP66

PRODUCT DIMENSIONS (All dimensions in mm)



SPARTAN IMPACT RESISTANT eVo DOMES		SPECIFICATIONS		
MODEL		VSM600I	VSCM520I	VSCM520IR
Image Area	4.9mm x 3.7mm	*	*	*
Pickup Element	752(H) x 582(V) Pixels, 1/3" Interline Transfer CCD	*	*	*
Scanning System	2:1 Interlace V: 50Hz, H: 15.625KHz	*	*	*
Sync System	Internal	*	*	*
Video Output	1.0 Vpp, 75 Ohms, negative sync	*	*	*
Resolution	580 TV Lines (Horizontal)	*		
	520 TV Lines (Horizontal)		*	*
Gamma Correction	0.45	*	*	*
Minimum Illumination	0.2 Lux (F1.6, AGC ON, 50 IRE)	*		
	0.3 Lux (F1.6, AGC ON, 50 IRE)		*	
	0 Lux (F1.6, AGC ON, 50 IRE, with IR LED's ON)			*
S/N Ratio	More than 48dB (AGC OFF)	*	*	*
Power Source	DC12V (Regulated Power Supply Required)	*	*	*
Power Consumption	130mA, 1.7 Watts (Max)	*		
	230mA, 3 Watts (Max)		*	
	300mA, 4.0 Watts, IR LED's ON (Max)			*
Ambient	30% ~ 90% RH / -10 ~ +60 °C	*	*	*
Dimensions Ø x D	151mm x 103mm	*	*	*
Weight	Approx 750g (Net)	*	*	*
Backlight Comp	ON / OFF Switchable (Centre Weighting)	*	*	*
White Balance	Auto Trace White balance (2300°~ 12300° K)		*	*
Auto Gain Control	Auto	*		*
	Switchable		*	
Iris Control / AES	Built-in Auto DC Iris driver / Up to 1/100,000 sec	*	*	*
Focal length	f = 3.5 ~ 8.5mm	*	*	
	f = 3.6 ~ 9.0mm (Moving Filter)			*
Max Relative Aperture	F1.6, Varifocal Auto Iris	*	*	*
IP Rating	IP66	*	*	*

